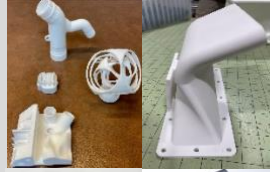


Services & Capabilities:

- **Additive Manufacturing/ 3D Printing**
 - Selective Laser Sintering (SLS)
 - Direct Metal Printing -Laser Powder Bed Fusion (DMP-LPBF)
 - Digital Light Projection (DLP)
 - Stereolithography (SLA)
 - Fuse Deposition Modeling (FDM)
- **CNC Manufacturing**
 - 4 & 5 axis
 - CNC Lathe
- **Welding & Fabrication**
 - GTMAW
 - GMAW
 - SMAW
- **Wiring & Harness Design**
 - IPC/WHMA-A-602C
- **Laser Cutting, Marking & Engraving**
 - Fiber
 - CO₂
- **Battery Management solutions**
 - Passive & Active
- **Multi chemistry battery & charging solutions**
 - LiFePO₄, LiION, LIPO, NiCAD
- **Command, Control & Communication (C3)**
- **Rapid Prototyping/ Reverse Engineering**
- **3D Scanning Services**
 - 250µm Resolution
- **CAD**
 - Solid Works
 - Design X
 - 3D Expert
 - Fusion360
- **Electrical Engineering**
- **Mechanical Engineering**
- **Nanomaterial Science and Engineering**



Company: At its core, ATAG Inc. is a *technology company*. In addition to our proven product lines, we also offer engineering services, product development and manufacturing. Vertically integrated, our in-house engineering, manufacturing, materials science, and business development team in concert with both our specialized and traditional tooling constitutes the next generation of rapid prototype and adaptive manufacturing utilizing the latest in material processes. **Speedcell** is a product division of **ATAG Inc.**, specializing in *lightweight, energy dense power storage* and management systems for a wide variety of applications from commercial to military and aerospace. As a veteran owned small business, our commitment is to excellence in creating innovative and technologically flexible solutions for our customers.

Facilities & Equipment:

- ❖ GF Machining Solutions DMP Flex 350
- ❖ 3D Systems sPro60 SLS
- ❖ 3D Systems ProJet6000 SLA
- ❖ 3D Systems ProX 6100 SLS
- ❖ 3D Systems Figure 4 Modular
- ❖ GF Machining Solutions Cut AM500
- ❖ Creaform HandiScan Black Elite Scanning System
- ❖ Markforged Mark 1 & 2
- ❖ Retsch PM400 Ball Mill
- ❖ HAAS VF-2 w/ 5 axis center



Materials:

- Metal (Inconel, Titanium, Stainless, Aluminum)
- PEEK
- ULTEM
- High Temperature High Strength composites
- Nylon based composites
- Fuel & Brake Fluid safe composites
- Carbon fiber - Kevlar hybrid composites
- Carbon fiber - Nylon composites
- Nylon glass hybrid composites
- Engineered flex composites
- Industrial Grade Rubber
- High Impact High Strength plastic composites



Technical Partners / Customers:

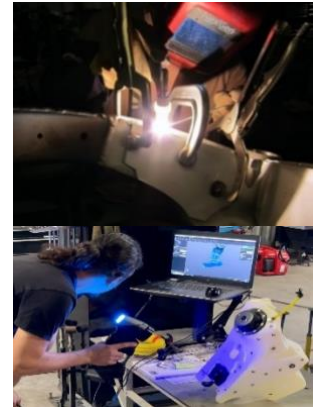


Advanced Technology Applications Group Inc.

New Mexico Facility
162 Westgate Suite B
Las Cruces, NM 88005

Arizona Facility
16220 South La Cañada Dr. Ste. 140
Sahuarita, AZ 85629

Contact: Josh Kauffman, CEO
Tel: (512) 743-9522 M
E-mail: josh@speedcell.com
josh@ataginc.com



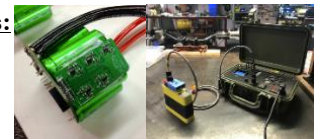
- **CAGE Code:** 7KZ84
- **DUNS#:** 08-009-7861
- **EIN:** 47-3229248
- **Organization:** C-Corp
 - Veteran Owned Small Business

NAICS Codes:

- 335910 Battery Manufacturing
- 333248 Other Industrial Machinery Manufacturing
- 335931 Wiring, Current carrying devices
- 332710 Machine Shop
- 334419 Electronic Component Manufacturing
- 335999 Miscellaneous, Electrical Component
- 336320 Motor Vehicle Electrical Equipment
- 541715 Research and Development in the Physical, Engineering, and Life Sciences
- 541713 Research and Development in Nanotechnology
- 541512 Computer-aided engineering systems integration design services

Certifications & Specifications:

- ISO 9001:2015



Competitive Edge:

- Our Team of engineers, scientists and business professionals are seasoned in practical application of emerging technologies
- Vertical integration of CAD, rapid prototyping, non-traditional forms (additive) and traditional forms (CNC & Welding) of manufacturing under one roof
- Nonrestrictive integrated hybrid problem solving approaches, combining the most effective of all processes, materials and hardware to deliver final solutions
- Rapid technology development and deployment in the form of hard parts that are sustainable in real world applications
- Cost effective performance-based processes and manufacturing
- 100% Made in the USA

FOR INQUIRES:

Aerospace, Defense, Commercial, and Motorsports Development

Josh@speedcell.com / josh@ataginc.com

Scientific, Material, and Technology Development
eva@speedcell.com

speedcell.com ; ataginc.com

520.658.3177 / 915.261.3900